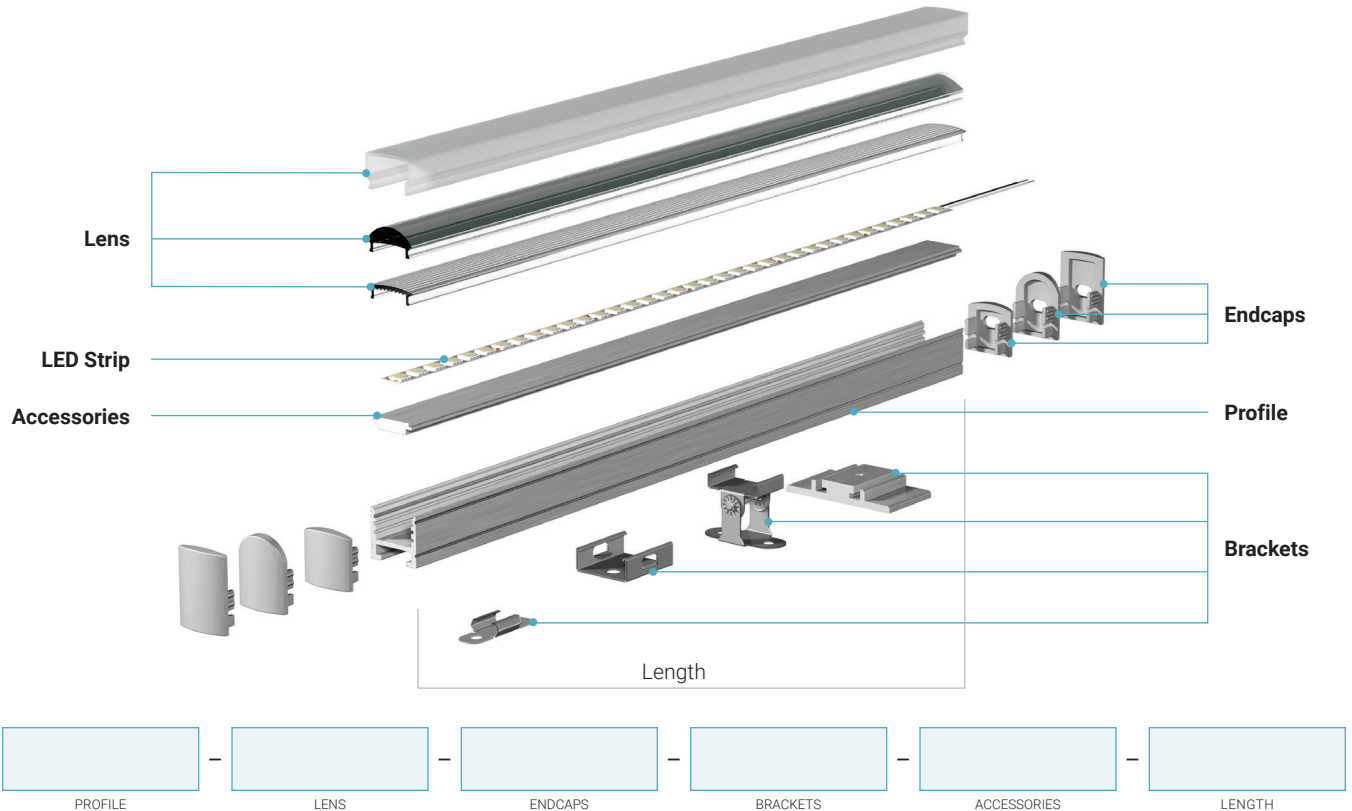


How to order

Example

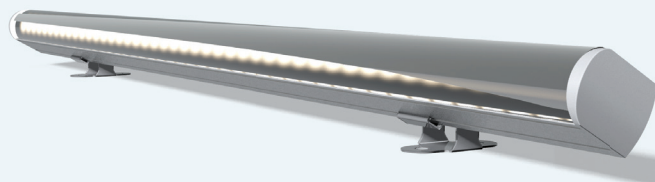
For each of the available profiles, you will get a presentation page in this catalog. Following this page, you will find another one containing a detailed list of all compatible components. By referring to the example provided at the bottom of this page, choose the parts needed and indicate them using the quick order codes provided below the components' descriptions (most often in a 4-digit format).



Usage example

To order a linear lighting fixture using a single LED strip, you can choose a profile from the 1000 Series. For a swiveling floodlight with a narrow beam (featured on the right), you can choose the 1400 profile with a Focus lens and corresponding endcaps (displayed beside each other in the components page for the profile), the swivel surface mount (in brackets), as well as the insert for adjusting the beam angle (in accessories). Finally, specify the needed total length of the fixture.

By default, the length is specified in inches, in accordance with North American woodworking standards. However, should you need to specify sizes in any other imperial or metric system units, please make sure to indicate the units used in the last field (length).



SEND ORDER :

Email : orders@lumentruss.com
 Phone : 1 855 384 3384
 Fax : 514-903-0649